

2020 Beaufort County Soybean Variety Trial



Blackland Farm Managers Tour Site, Terra Ceia near Pantego NC

Cooperating Grower: DHT Farms, Derick and Hope Tetterton

Soil Type: Cape Fear Fine Sandy Loam

Planting Dates: May 14th, 2020 for MG2, 3, 4.0-4.4, 4.5-4.9, 5.0-5.4, 5.5-5.9 tests.

June 3rd 2020 for MG6, 7 tests.

All trials planted at 110,000 ppa on 30 inch rows.

Each test was harvested once all varieties in the test were mature, and as the weather allowed (harvest dates: 10-7, 10-15, 10-22, and 11-4).

Herbicide program: Conventional

Pest Management: Insects treated as needed (worms once, stink bugs twice)

No fungicides or foliar fertilizers were applied.

Weather data from this site can be viewed on the last page of this report.

Varieties highlighted in green in each test are statistically the same, meaning the differences in yield are likely attributable to factors other than variety, such as variability in soil fertility, or pockets of insect or disease pressure, across the area comprising the test.

We wish to thank the following for their support:

The Blackland Farm Managers Association.

Derick Tetterton, for providing the land and numerous other resources needed to conduct this variety trial, and Todd Waters, Coastal Cotton Gin, for providing room for equipment storage and parking.

Seed companies, for participating in this project.

Dr. Rachel Vann, NC State Soybean Extension Specialist, and Ryan Heiniger, NC State OVT Director, for the generous loan of equipment, manpower, inputs, and statistical analysis of data.

Michael Buffaloe, retired NC State Soybean Extension Program Technician, for coming out of retirement to harvest these plots.

Rod Gurganus

Beaufort County

rod_gurganus@ncsu.edu

252-943-5832

Andrea Gibbs

Hyde/Tyrrell Counties

andrea_gibbs@ncsu.edu

252-926-4486

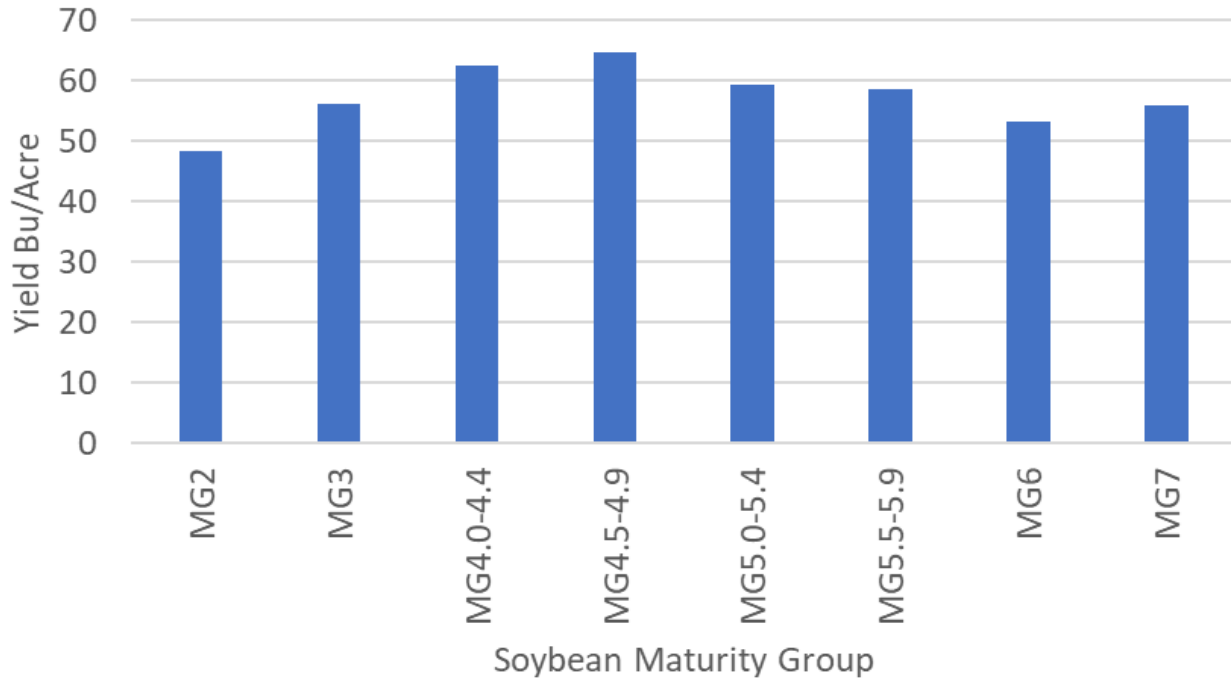
Jalynne Waters

Washington County

jalynne_waters@ncsu.edu

252-793-2163

2020 Soybean Variety Trial Yield by Maturity Group



For more information, contact your County Extension Agent:

Rod Gurganus
Beaufort County

rod_gurganus@ncsu.edu

252-943-5832

Andrea Gibbs
Hyde/Tyrrell Counties

andrea_gibbs@ncsu.edu

252-926-4486

Jalynne Waters
Washington County

jalynne_waters@ncsu.edu

252-793-2163

MG2

Company/Brand	Variety	Yield (bu/A)
DynaGro	S28XT58	48.4
Mean		48.4

MG3

Company/Brand	Variety	Yield (bu/A)
Syngenta	S39-G2X	66.7
Local Seed	LS3976X	61.6
Asgrow	AG38X38	59.8
Morsoy	MS3907	57.9
Croplan	CP3850X	57.4
Pioneer	P39A58X	52.7
Southern Harvest	SHX3822GE3	52.5
Credenz	CZ3930GTLL	52.4
AgVenture	AV39V7E	46.9
Mean		56.4
CV		3.1
LSD (p=0.05)		3.1
DF		16
Bolded varieties are not statistically different from the highest yielding variety		



For more information, contact your County Extension Agent:

Rod Gurganus
Beaufort County

rod_gurganus@ncsu.edu

252-943-5832

Andrea Gibbs
Hyde/Tyrrell Counties

andrea_gibbs@ncsu.edu

252-926-4486

Jalynne Waters
Washington County

jalynne_waters@ncsu.edu

252-793-2163

MG4

Company/Brand	Variety	Yield (bu/A)
UniSouth Genetics	7447XTS	72.2
Croplan	CP4419XS	69.5
AgVenture	AV42V8X	66.6
Variety No Longer Available		64.6
Local Seed	LS4407X	63.8
Armor	42-D27	62.7
DynaGro	S41XS98	62.0
Pioneer	P42A96X	61.3
Sourthen Harvest	SH4019LLGT	55.1
Credenz	CZ4240GTLL	47.6
Mean		62.5
CV		4.6
LSD (p=0.05)		4.9
DF		18
Bolded varieties are not statistically different from the highest yielding variety		



For more information, contact your County Extension Agent:

Rod Gurganus
Beaufort County
rod_gurganus@ncsu.edu
252-943-5832

Andrea Gibbs
Hyde/Tyrrell Counties
andrea_gibbs@ncsu.edu
252-926-4486

Jalynne Waters
Washington County
jalynne_waters@ncsu.edu
252-793-2163

MG4.5

Company/Brand	Variety	Yield (bu/A)
Asgrow	AG48X9	73.1
Croplan	CP4811XS	70.8
Morsoy	MS 4846 RXT	70.6
Local Seed	LS4889XS	68.1
DynaGro	S48XT56	66.4
UniSouth Genetics	7480XT	65.7
Credenz	CZ4770X	64.0
Pioneer	P46A86X	63.9
Southern Harvest	SH4820E3	62.9
AgVenture	AV46V6X	62.9
Progeny	P4775E3S	61.8
Armor	49-D13	59.1
Variety No Longer Available		57.9
Syngenta	S47-Y9X	57.0
Mean		64.6
CV		5.2
LSD (p=0.05)		5.6
DF		26
<p>Bolded varieties are not statistically different from the highest yielding variety</p>		



For more information, contact your County Extension Agent:

Rod Gurganus
 Beaufort County
rod_gurganus@ncsu.edu
 252-943-5832

Andrea Gibbs
 Hyde/Tyrrell Counties
andrea_gibbs@ncsu.edu
 252-926-4486

Jalynne Waters
 Washington County
jalynne_waters@ncsu.edu
 252-793-2163

MG5

Company/Brand	Variety	Yield (bu/A)
Asgrow	AG52X9	63.0
Progeny	P5252RX	61.8
Credenz	CZ5000X	61.8
Croplan	CP5010XS	61.2
Sourthen Harvest	SH5321E3	61.0
DynaGro	S52XT91	60.8
UniSouth Genetics	7540XT	59.7
Syngenta	S53-F7X	58.1
Pioneer	P52A05X	57.3
Local Seed	LS5386X	56.1
Variety No Longer Available		55.6
Morsoy	MS 5398 RXT	54.4
Mean		59.2
CV		4.4
LSD (p=0.05)		4.4
DF		22
Bolded varieties are not statistically different from the highest yielding variety		



For more information, contact your County Extension Agent:

Rod Gurganus
 Beaufort County
rod_gurganus@ncsu.edu
 252-943-5832

Andrea Gibbs
 Hyde/Tyrrell Counties
andrea_gibbs@ncsu.edu
 252-926-4486

Jalynne Waters
 Washington County
jalynne_waters@ncsu.edu
 252-793-2163

MG5.5

Company/Brand	Variety	Yield (bu/A)
DynaGro	S58XT30	61.9
Asgrow	AG56X8	60.9
Local Seed	LS5797X	60.6
Progeny	5554	60.1
Credenz	CZ5700X	60.0
Syngenta	S57-A7X	59.5
Morsoy	MS 5607	58.3
Croplan	CP5548X	58.3
Pioneer	P55A49X	57.4
Southern Harvest	SH6020LL/STS	57.3
Variety No Longer Available		55.3
Armor	55-D57	53.3
Mean		58.6
CV		6.1
LSD (p=0.05)		n/s
DF		26
No significant separation of varieties		



For more information, contact your County Extension Agent:

Rod Gurganus
 Beaufort County
rod_gurganus@ncsu.edu
 252-943-5832

Andrea Gibbs
 Hyde/Tyrrell Counties
andrea_gibbs@ncsu.edu
 252-926-4486

Jalynne Waters
 Washington County
jalynne_waters@ncsu.edu
 252-793-2163

MG6

Company/Brand	Variety	Yield (bu/A)
Armor	62-D60	64.8
Morsoy	MS 6208 RXT	62.0
Croplan	CP6208X	58.4
Southern Harvest	SH6515LL/STS	57.9
Asgrow	AG69X0	56.4
Progeny	P6461RX	55.4
Syngenta	S61-M2X	55.0
Ag Venture	AV61F8X	51.4
Variety No Longer Available		47.6
Mean		56.6
CV		11.5
LSD (p=0.05)		n/s
DF		16
No significant separation of varieties		

MG7

Company/Brand	Trait	Yield (bu/A)
Morsoy	MS 7057 RXT	64.5
Progeny	7082	62.9
Variety No Longer Available		57.0
Sourthen Harvest	SH7418LL	38.9
Mean		55.8
CV		4.0
LSD (p=0.05)		4.4
DF		6
Bolded varieties are not statistically different from the highest yielding variety		

For more information, contact your County Extension Agent:



Rod Gurganus
Beaufort County

rod_gurganus@ncsu.edu

252-943-5832

Andrea Gibbs
Hyde/Tyrrell Counties

andrea_gibbs@ncsu.edu

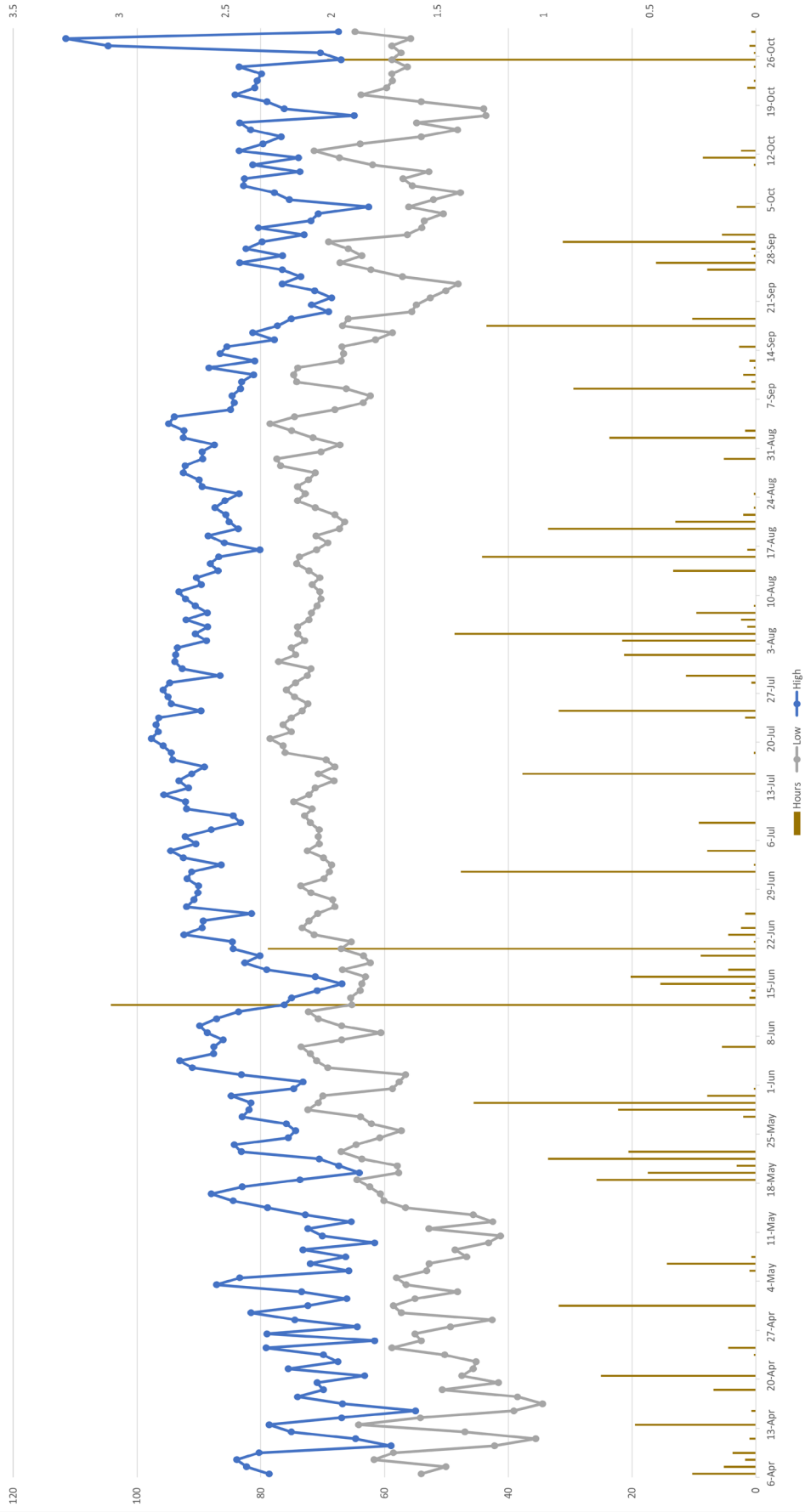
252-926-4486

Jalynne Waters
Washington County

jalynne_waters@ncsu.edu

252-793-2163

2020 Blackland Farm Managers Tour Site
DHT Farms, Terra Ceia NC



Rod Gurganus	Andrea Gibbs	Jalynne Waters
Beaufort County	Hyde/Tyrrell Counties	Washington County
rod_gurganus@ncsu.edu	andrea_gibbs@ncsu.edu	jalynne_waters@ncsu.edu
252-943-5832	252-926-4486	252-793-2163

